

Check accessories: 1 water measuring cup, 1 bean measuring cup, 2 head resistant and environment friendly silica gels and 2 pieces of filter cloth

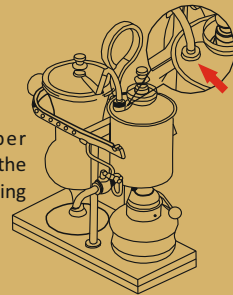


- First, open the alcoholic burner, fill it with industrial alcohol about 60% its capacity
- Take out the filter cloth, put it in the boiled water for 12 minutes, clean it with fresh water then use
- It to wrap the filter For the using, use boiled to make a trial. To clean the utensil after using.

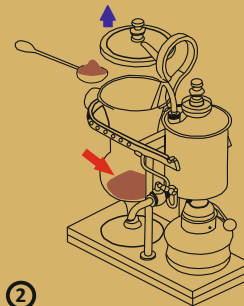


make sure rubber gasket close with the server for well sealing

①

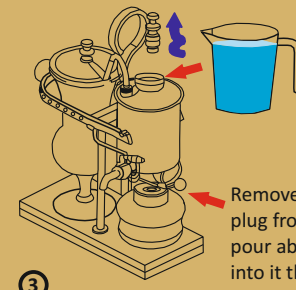


②



place 5 tablespoons (about 40g) of ground coffee into the glass carafe

③



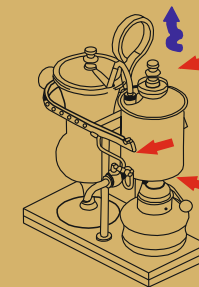
Remove the top center plug from the server and pour about 450cc water into it then close it

Adjust the counterbalance to let server keep the burner cover open, ignite the flame

④



⑤



While the coffee is recalled into the server, release the top center plug to let air in, turn on the tap then you can enjoy the delicious coffee